



# Battery Solution Expert

HERCULES | NGE<sup>®</sup>  
∞ ENERGY

# About Us

## Next Generation Energy Tech Co., Ltd — Your Battery Solution Expert !

NGE is a leading lithium battery solution provider and a battery integration supplier in the field of eMobility, marine, ESS, industrial and recreational applications.

We've been dedicated in this field for more than 10 years and closely partnered with some of the best tier one lithium battery manufacturers, like EVE, Rept-Battero, CALB, Svolt, etc.

Supported by highly developed supply chain of lithium battery and professional R&D team, NGE is able to customize the structure designs and integration of its products, which helps batteries achieve their best performance for different markets. Our products have been widely exported to Europe, North America, Africa and other areas all over the world.

NGE has also successfully achieved ISO 9001 and ISO 14001 certification. This accomplishment highlights our dedication to quality management and environmental responsibility.

In the future, we will stay committed to providing premier solutions and services for battery applications worldwide.

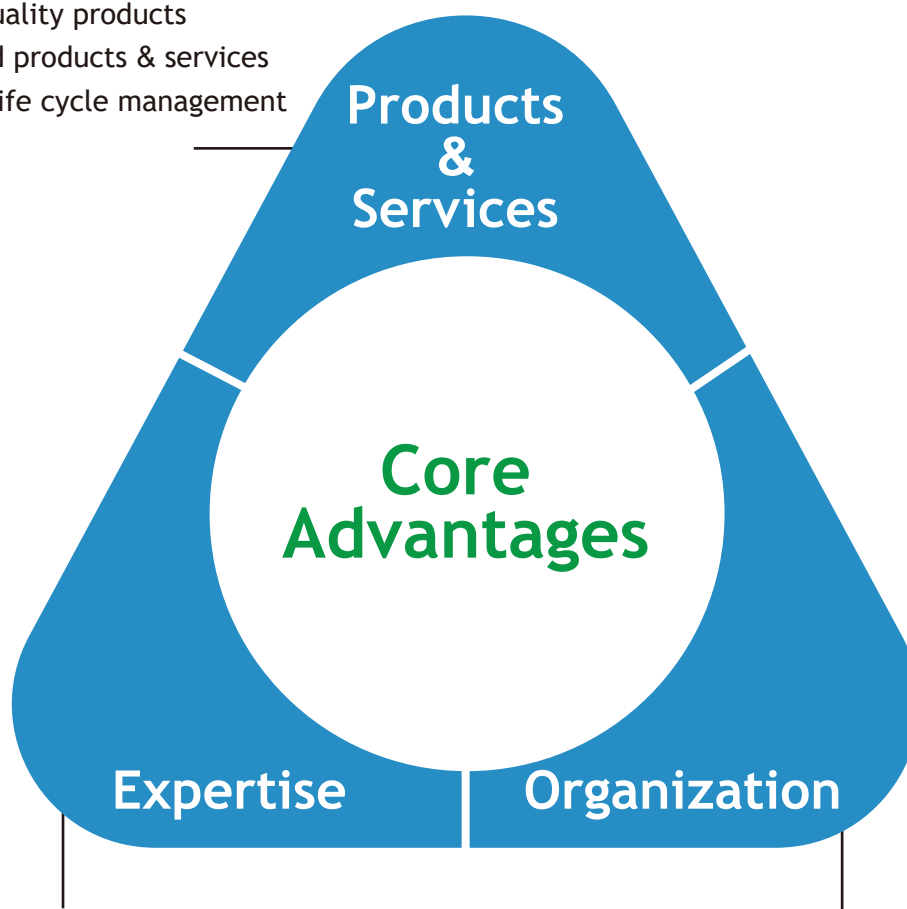
**Vision:** Accelerate the evolution of electrification, and keep contributing to a cleaner world.

**Mission:** Take the energy challenge and build outstanding battery solutions and products.

**Core Value:** Integrity, Quality, Efficiency, Innovation.



- Superior-quality products
- Customized products & services
- Complete life cycle management





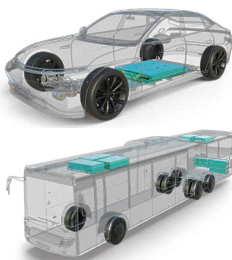

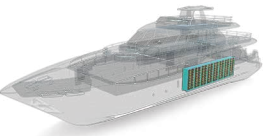
- 10+ years of experience
- Constant technical innovations
- Professional R&D team

- Comprehensive & effective supply chain
- Efficient marketing team
- Complete after-sales service system



# Comprehensive Solutions

Cell	Module	System
Prismatic LFP Cell Prismatic NMC Cell Cylindrical Cell Pouch Cell Na <sup>+</sup> Cell Customized Cells Service	Prismatic LFP Module Prismatic NMC Module Customized Modules Service	NMC Power Battery Pack Marine Power Battery Pack Marine Power Battery Rack C&I ESS Battery Pack C&I ESS Battery Rack Customized Systems Service

 <h3>Customized Cells</h3> <p>Partner with the best tier-one lithium battery manufacturers, our products achieve the best performance for different markets. To enhance the flexibility of assembly, NGE offers customized threaded-terminal welding services.</p>	<h3>Industrial</h3> <p>Compared to lead-acid and other lithium batteries, lithium iron phosphate batteries offer significant advantages, including improved charge and discharge efficiency, longer life span and the ability to deep cycle while maintaining power. Non maintenance and super long life make them a worthwhile investment and a smart long-term solution.</p> 
 <h3>E-mobility</h3> <p>Lithium batteries have an advantage over other cell chemistries due to its specific energy density, cost, scale of production in mobility. NGE provides global users with the most cutting-edge and most reliable lithium battery products for electric vehicles.</p>	
 <h3>Marine</h3> <p>Due to the higher densities of energy and power, lithium batteries are light on weight and small in size. Moreover, lithium battery has longer lifetime, higher depth of discharge, lower self-discharge and faster charging. All of these advantages make lithium battery more and more popular in marine applications.</p>	<h3>Energy Storage</h3> <p>Battery energy storage system can store energy from different sources and discharge it when needed. BESS consists of one or more batteries and can be used to balance the electric grid, provide backup power and improve grid stability.</p>



# Product Lineup

- ① Cell
- ② Module
- ③ Pack
- ④ Rack
- ⑤ System

# Prismatic LFP Cell

## Features

- Ultra-safety:** Aircraft-grade safety and reliability
- High-quality:** Advanced production management and traceability system to ensure high quality of cell
- High-consistency:** Extreme manufacturing plus automatic sorting process to ensure high-level consistency
- Long cycle-life:** Life up to 10,000 cycles
- Customized:** Custom threaded terminals available
- Certificate:** UN38.3, MSDS, IEC, UL, RoHS compliant



## Model List

Model	Nominal Capacity (Ah)	Voltage (V)	Dimensions (L*W*H/mm)	Energy Density (Wh/kg)	Cycle Life	Continuous Charging/Discharging Rate	Connection
LFP22	22	3.22	148.7*17.7*131.8	113	4500(80% SOH)	3C/3C	LW(Laser Welding)
LFP50	50	3.2	149.1*39.72*101.31	135	4000(80% SOH)	1C/1C	LW/M6 Screw/Stud
LFP65	65	3.17	183.5*34.3*94.15	170	5500(80% SOH)	1C/1C	LW/M6 Screw/Stud
LFP72-1	72	3.2	148.6*39.7*111	170	4000(80% SOH)	1C/2C	LW/M6 Screw/Stud
LFP72-2	72	3.2	160*36.5*142	134	2500(80% SOH)	1C/6C	LW/M6 Screw/Stud
LFP90(blade)	90	3.2	414.9*121.4*15	168	3000(80% SOH)	1.4C/3.5C	LW(Laser Welding)
LFP100-1	100	3.2	160*49.9*118.5	161	5000(80% SOH)	0.5P/0.5P	LW/M6 Screw/Stud
LFP100-2	100	3.2	174.2*47.8*132.3	152	3000(80% SOH)	0.5C/0.5C	LW/M6 Screw/Stud
LFP104	104	3.22	148.2*52.32*119	177	2000(80% SOH)	1C/2C	LW/M6 Screw/Stud
LFP105	105	3.2	130.3*36.35*200.5	170	4000(80% SOH)	1C/1C	LW/M4&M6 Screw/Stud
LFP106	106	3.22	148.6*52.2*118.5	181	2000(80% SOH)	2.5C/2.5C	LW/M6 Screw/Stud
LFP122-1	122	3.2	149.1*52.3*119	195	3500(70% SOH)	2.2C/2.2C	LW/M6 Screw/Stud
LFP122-2	122	3.22	148.6*52.3*119	193	3500(70% SOH)	3C/3C	LW/M6 Screw/Stud
LFP124	124.9	3.22	309.5*37.2*88	183	1500(80% SOH)	3C/3C	LW/M6 Screw/Stud
LFP135	135	3.22	149.1*79.22*105.31	165	2000(80% SOH)	1.6C/1C	LW/M6 Screw/Stud
LFP147	147	3.2	580*120*16.4	185	2500(80% SOH)	2.1C/1C	LW(Laser Welding)
LFP150	150	3.22	174*36.3*206.8	172	3000(80% SOH)	1C/1C	LW/M6 Screw/Stud
LFP163	163	3.2	174.4*36.4*220	171	4000(80% SOH)	1C/1C	LW/M6 Screw/Stud
LFP168	168	3.22	200.7*33.25*207	179	4000(80% SOH)	1C/1C	LW/M6 Screw/Stud
LFP172	172	3.2	301*36.7*129.2	176	2000(80% SOH)	1.16C/1.16C	LW/M6 Screw/Stud

# Prismatic LFP Cell

## Features

- Ultra-safety:** Aircraft-grade safety and reliability
- High-quality:** Advanced production management and traceability system to ensure high quality of cell
- High-consistency:** Extreme manufacturing plus automatic sorting process to ensure high-level consistency
- Long cycle-life:** Life up to 10,000 cycles
- Customized:** Custom threaded terminals available
- Certificate:** UN38.3, MSDS, IEC, UL, RoHS compliant



## Model List

Model	Nominal Capacity (Ah)	Voltage (V)	Dimensions (L*W*H/mm)	Energy Density (Wh/kg)	Cycle Life	Continuous Charging/Discharging Rate	Connection
LFP178-1	178	3.22	174.4*36.4*220	186	4000(80% SOH)	1C/1C	LW/M6 Screw/Stud
LFP178-2	178	3.22	281.1*61*88.6	181	2000(80% SOH)	2C/2.32C	LW/M6 Screw/Stud
LFP206	206	3.22	200.7*35.9*218.2	189	4000(80% SOH)	1C/1C	LW/M6 Screw/Stud
LFP218	218	3.22	200.7*39*218.2	187	4000(80% SOH)	1C/1C	LW/M6 Screw/Stud
LFP230	230	3.2	173.93*53.85*207.2	180	4000(80% SOH)	1C/1C	LW/M6&M8 Screw/Stud
LFP234	234	3.22	301.6*42*143	187	4000(80% SOH)	1C/1C	LW/M6&M8 Screw/Stud
LFP304	304	3.2	173.7*71.7*207.2	178	4000(80% SOH)	1C/1C	LW/M6&M8 Screw/Stud
LFP310	310	3.2	173.7*71.7*207.2	177	8000(70% SOH)	1C/1C	LW/M6&M8 Screw/Stud
LFP314	314	3.2	173.7*71.7*207.2	179	8000(70% SOH)	0.5P/0.5P	LW/M6&M8 Screw/Stud
LFP320	320	3.2	174.7*71.57*207.2	180	8000(70% SOH)	1C/1C	LW/M6&M8 Screw/Stud
LFP324-1	324	3.2	174*71.75*206.8	185	4000(80% SOH)	1C/1C	LW/M6&M8 Screw/Stud
LFP324-2	324	3.22	200.7*56.9*218.2	193	4000(80% SOH)	1C/1C	LW/M6&M8 Screw/Stud
LFP350(blade)	350	3.2	506.4*215.33*26.3	170	10000(70% SOH)	0.5P/0.5P	LW(Laser Welding)
LFP392	392	3.2	182*75*224.5	185.6	6000(80% SOH)	0.5P/0.5P	LW/M6&M8 Screw/Stud
LFP628	628	3.2	352.3*71.7*207.2	174	8000(70% SOH)	0.5P/0.5P	LW/M6&M8 Screw/Stud
LFP668	668	3.2	352.2*71.7*206.7	190	4000(80% SOH)	1C/1C	LW/M6&M8 Screw/Stud

## Applications

Passenger Vehicle, Pure Electric Bus, Hybrid Electric Bus, Heavy-duty Vehicle, Light Commercial Vehicle, Marine, Telecom, Commercial and Residential Storage, etc



# Prismatic NMC Cell



## Features

- Standard Dimension:** VDA format available
- High-quality:** Advanced production management and traceability system to ensure high quality of cell
- High-safety:** Automotive grade safety, explosion-proof, no leakage
- High Energy Density:** Weight energy density higher than 240 Wh/kg
- Certificate:** UN38.3, MSDS, IEC, REACH compliant

## Model List

Model	Format	Nominal Capacity (Ah)	Voltage (V)	Dimensions (L*W*H/mm)	Energy Density (Wh/kg)	Cycle Life	Continuous Charging / Discharging Rate
NMC5		5.45	3.66	120.6*12.6*69.1	105	4000(80% SOH)	10C/10C
NMC19		19.5	3.66	148.7*17.7*98.8	130	2000(80% SOH)	5C/5C
NMC58-1	VDA	58	3.62	148.2*26.72*95.21	245	3000(70% SOH)	1C/2C
NMC58-2	VDA	58	3.73	148.66*26.72*99.21	248	3000(70% SOH)	1.74C/2.5C
NMC59	VDA	59	3.74	148.66*26.72*99.21	248	1500(80% SOH)	1C/1C
NMC117	VDA	117	3.74	148*52.3*105.8	240	1700(80% SOH)	1.74C/2C
NMC126	VDA	126	3.67	148*52.3*105.2	251	1500(80% SOH)	1C/1C
NMC135	VDA	136.5	3.6	146.8*52.3*105.3	262	1400(80% SOH)	1C/1C
NMC169	MEB	169	3.67	220.6*44.5*112	245	2000(80% SOH)	1C/1C

## Applications

Pure electric vehicle (BEV), plug-in hybrid electric vehicle (PHEV), hybrid electric vehicle (HEV), 48V system for micro-hybrid, etc



(BEV)



(PHEV)



(HEV)

# Cylindrical Cell

## Features

- High-quality:** Advanced production management and traceability system to ensure high quality of cell
- High-safety:** Multi-level protective structures, automated manufacturing processes
- Extreme Manufacturing:** Extremely strict processes, extremely fast production speed, extremely high quality requirements
- High-consistency:** Extreme manufacturing and automatic sorting process to ensure high-level consistency
- High Energy Density:** Widely used for e-mobility, e-tool, with extremely high energy density
- Certificate:** UN38.3, MSDS, IEC, UL compliant

## Model List

Model	Chemistry	Nominal Capacity (Ah)	Voltage (V)	Internal Resistance (mΩ)	Energy Density (Wh/kg)	Charging/Discharging Rate
18650P	NMC	2.5	3.6	≤18	187.5	1.6C/12C
18650E-1	NMC	2.55	3.6	≤30	195	1C/3C
18650E-2	NMC	3.2	3.6	≤30	251	1C/3C
21700P-1	NMC	4.0	3.6	≤12	206	1.5C/12.5C
21700P-2	NMC	4.0	3.6	≤5	214	2C/17.5C
21700E-1	NMC	5.0	3.65	≤20	265	0.5C/3C
21700E-2	NMC	5.6	3.6	≤15	284	1C/3C
33140	LFP	15.0	3.2	≤3	182	1C/3C
40135	LFP	20.5	3.2	≤3	176	2C/4C
46140	LFP	30	3.2	≤4	175	1.2C/3C
60150	LFP	50	3.2	≤2.6	169	1.2C/1.5C
65180	LFP	75	3.2	≤1	181	1.2C/1C



## Applications

Energy Storage System, Power tool, Electric Vehicle, Industrial purpose, etc

# Pouch Cell



## Features

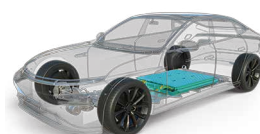
- High-quality:** Tier one quality level, comprehensive testing and verification
- Standard Dimension:** VDA format available
- Flexible Size:** Flexible structure to fit more mechanical designs
- High-safety:** Automotive grade safety, explosion-proof, no leakage
- Certificate:** UN38.3, MSDS, IEC, UL compliant

## Model List

Model	Nominal Capacity (Ah)	Voltage (V)	Dimensions (L*W*H/mm)	Energy Density (Wh/kg)	Cycle Life	Continuous Charging / Discharging Rate
NMC12	12	3.6	172.5*5.2*83	295	500(80% SOH)	2C/5C
NMC30	30	3.65	230*7.2*130.5	249	3000(70% SOH)	0.33C/0.33C
NMC31	31	3.6	209.5*9.5*87	320	500(80% SOH)	2C/3C
NMC35	35	3.6	209.5*10.4*87	320	500(80% SOH)	2C/3C
NMC50	50.5	3.65	301.5*11.6*99.7	250	1000(80% SOH)	1C/2C
NMC61	61	3.65	301.5*13.6*99.7	260	3000(70% SOH)	0.33C/0.33C
NMC65	65	3.65	301.5*14.3*99.7	263	3000(70% SOH)	0.33C/0.33C

## Applications

Pure electric vehicle (BEV), plug-in hybrid electric vehicle (PHEV), 48V system for micro-hybrid, etc



(BEV)



(PHEV)

# Sodium-ion Battery



## Features

### High Security:

No fire or explosion during overcharge, over-discharge, short circuit, acupuncture, extrusion and other tests.

### Low Cost:

Sodium is abundant in resources, ranking sixth in abundance in the earth's crust, and is evenly distributed and cheap.

### Lithium-Battery Compatible:

Sodium-ion batteries have similar working principles and battery structures to lithium-ion batteries.

### Heat and Cold Resistance:

Both high and low temperature tests show good capacity retention.

### Certificate:

UN38.3, MSDS compliant

## Model List

Model	Type	Nominal Capacity (Ah)	Voltage (V)	Dimensions (mm)	Energy Density (Wh/kg)	Cycle Life	Continuous Charging /Discharging Rate	Connection
Na <sup>+</sup> 23	Cylindrical	23	2.9	Φ60.24*148.22	90	3000(70% SOH)	5C/15C	LW(Laser Welding)
Na <sup>+</sup> 28	Cylindrical	28	2.9	Φ60.24*148.22	108	2000(70% SOH)	2C/8C	LW(Laser Welding)
Na <sup>+</sup> 50	Prismatic	50	2.85	160.3*50.5*118	86	8000(80% SOH)	1C/5C	LW/M6 Screw/Stud
Na <sup>+</sup> 170	Prismatic	170	2.85	174.6*72*207	102	6000(80% SOH)	1P/1.5P	LW/M6&M8 Screw/Stud
Na <sup>+</sup> 175	Prismatic	175	2.9	174.26*71.57*206.81	108	8000(80% SOH)	2C/2C	LW/M6&M8 Screw/Stud

## Applications

Electric Bicycle, Electric Motorcycle, Electric Tricycle, Low Speed Electric Vehicle, Household Energy Storage, Industrial Energy Storage

# Prismatic LFP Module



## Features

- Laser welding manufacturing techniques to guarantee stable electronic connection
- Reliable structural strength and stability
- Suitable for all kinds of industrial voltage platform, easy maintenance
- Excellent cooling conditions and homogeneity of temperature
- UN38.3, MSDS compliant

## Model List

Cell	Configuration	Nominal Capacity (Ah)	Voltage (V)	Nominal Energy (kWh)	Weight (kg)	Dimensions(L*W*H/mm)
LFP54	1P22S	54	70.4	3.802	26	717*202*102
LFP65	1P16S	65	51.2	3.328	23	565*214*121
LFP100	1P8S	100	25.6	2.56	17.80	46.7*163*125.6
	2P4S	200	12.8	2.56	20.50	447.8*164*125.6
	1P10S	100	32	3.2	21.2	540*163.2*122
	1P11S	100	35.2	3.52	23.2	590*163.2*122
	1P12S	100	38.4	3.84	25.3	640*163.2*122
LFP105	1P7S	105	22.4	2.352	15.21	300.3*134.5*210.4
	1P8S	105	25.6	2.688	17.54	339.1*136.2*224
	2P4S	210	12.8	2.688	17.52	339.1*136.2*224
	1P12S	105	38.4	4.032	25.78	485.9*136.2*224
	2P6S	210	19.2	4.032	25.65	485.9*136.2*224
	3P4S	315	12.8	4.032	25.64	485.9*136.2*224
	4P3S	420	9.6	4.032	25.64	485.9*136.2*224
	1P15S	105	48.0	5.040	31.89	596*136.2*224
	2P8S	210	25.6	5.376	34.80	630.3*136.2*224
	1P16S	105	51.2	5.376	34.80	632.7*136.2*224

# Prismatic LFP Module



## Model List

Cell	Configuration	Nominal Capacity (Ah)	Voltage (V)	Nominal Energy (kWh)	Weight (kg)	Dimensions(L*W*H/mm)
LFP122	1P6S (VDA 355)	122	19.2	2.342	14	355*153*128
	1P8S	122	25.6	3.123	18.67	468*152*130
	2P4S	244	12.8	3.123	18.67	468*152*130
	1P12S	122	38.4	4.685	25.4	668*153*129
	2P6S	244	19.2	4.685	25.4	668*153*129
	3P4S	366	12.8	4.685	25.4	668*153*129
LFP163	1P8S	163	25.6	4.173	29.65	720*240*107
	1P15S	163	48	7.824	48.7	590*178*236
	1P16S	163	51.2	8.346	51.75	624*178*236
	1P20S	163	64.4	10.497	64	770*178.8*224.5
	2P10S	326	32.2	10.497	64	770*178.8*224.5
	1P24S	163	77.28	12.597	76.6	916*178.8*224.5
	2P12S	326	38.64	12.597	76.6	916*178.8*224.5
	4P4S	652	12.8	8.346	52	624*178*236
LFP173	1P11S	173	35.42	6.128	39.4	500.1*178.9*213.9
	1P12S	173	38.64	6.685	42.87	541.8*178.9*213.9
	1P14S	173	45.08	7.799	49.97	625.2*180*215
LFP230	1P6S	230	19.2	4.508	26.7	363*176.9*211.5
	1P8S	230	25.6	5.888	35.21	473.9*177.9*230
	1P12S	230	38.4	8.832	52.21	690.3*177.9*230
	1P13S	230	41.6	9.568	58.26	743.9*179.3*230
	1P16S	230	51.2	11.776	67.29	905.9*179.9*230
	2P8S	460	25.6	11.776	69.33	905.9*177.9*230

# Prismatic LFP Module

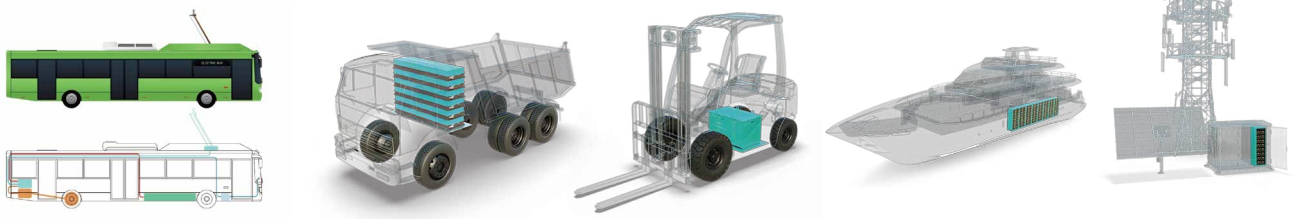


## Model List

Cell	Configuration	Nominal Capacity (Ah)	Voltage (V)	Nominal Energy (kWh)	Weight (kg)	Dimensions(L*W*H/mm)
LFP304	1P4S	304	12.8	3.891	23.7	329.5*177.7*230
	1P8S	304	25.6	7.782	46.08	617.7*177.7*230
	1P10S	304	32	9.728	59.3	761.7*179.3*230
	1P12S	304	38.4	11.673	70.83	905.7*179.3*230
LFP314	1P4S	314	12.8	4.019	25	333.5*178*213
	1P5S	314	16	5.024	25.8	486*177.6*215.6
	1P8S	314	25.6	8.038	45.15	629*178.5*215
	1P12S	314	38.4	12.057	67	913.6*178.5*213.9
	1P13S	314	41.6	13.06	73.1	970*177*211

## Applications

Industrial and Recreational Applications, Electrical Bus, Caravan, Backup Power, Marine, ESS, Traction Power, Portable Battery and Others



# Prismatic NMC Module



## Features

- Laser welding manufacturing techniques to guarantee stable electronic connection
- FPC and heating film integrated to ensure the stability of module
- Reliable structural strength and stability
- Standard VDA&MEB battery module and its derivatives
- Excellent cooling conditions and homogeneity of temperature

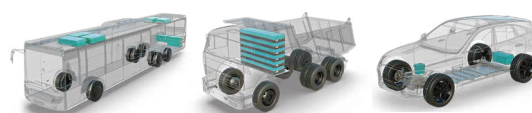
## Model List

Cell	Configuration	Format	Nominal Capacity (Ah)	Voltage(V)	Nominal Energy(kWh)	Weight (kg)	Dimensions(L*W*H/mm)
NMC58	1P12S	VDA 355	58	44.04	2.554	12.2	355*151*108.1
	3P4S	VDA 355	174	14.68	2.554	12.2	355*151*108.1
	2P6S	VDA 355	116	22.02	2.554	12	355*151*108.1
	2P7S		116	25.69	2.98	13	410*151*111
	3P5S		174	18.35	3.192	15.33	440.5*151.9*119
	3P6S		174	22.02	3.831	18.24	522.2*151.9*119
NMC169	1P12S	MEB 590	169	43.8	7.402	32.8	594*224.5*115

## Applications

Passenger Vehicle  
Plug-in Hybrid Vehicle  
Agricultural Vehicle

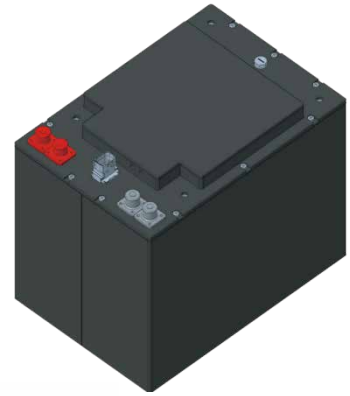
Heavy-duty Vehicle  
Light Commercial Vehicle  
Electric Bus



# NMC Power Battery Pack

## Features

- High performance Lithium-Ion NMC battery pack, with a built in battery management system (BMS).
- Drop-in fitment, enables seamless battery pack installation, providing a direct replacement solution with precise compatibility and minimal modifications to the existing mounting system.
- Flexible & scalable, allows for easy adaptation to varying power requirements, enabling modular expansion and customisation to meet changing energy storage needs across diverse applications.
- Fast charging, enables quick battery replenishment, minimising downtime and providing efficient, high-speed energy restoration for increased operational flexibility.



## Model List

Item	Pack
Type	Prismatic NMC
Model	5.8kWh Battery Pack
Configuration	2P14S
Capacity(Ah)	116
Voltage(V)	50.6
Energy(kWh)	5.8
Dimensions(mm)	W352*D243*H300
Communication	CAN
Cooling Method	No active cooling
Weight	35kg

## Applications

Industrial mobility, pure electric vehicle (BEV), plug-in hybrid electric vehicle (PHEV), hybrid electric vehicle (HEV), 48V low voltage system, etc.

# Marine Power Battery Pack



## Features

- Long cycle life, with a total service life of up to 15 years
- Thermal management solutions: liquid cooling / liquid heating
- Equipped with explosion vents, fire prevention and suppression systems, and electrolyte leakage detection to ensure safety
- C5 corrosion protection level, suitable for both inland and marine environments
- IP67 high protection rating, ensuring full-scenario battery applications
- BMS with continuous active balancing, balancing current up to 3A, significantly improving cell consistency

## Model List

Item	Pack
Model	B2-1P18S-21/22
Cell	LFP310
Configuration	1P18S
Nominal Voltage	57.6VDC
Voltage Range	52.2-63VDC
Max. Continuous Charge/Discharge Rate	1C
Capacity	310Ah
Energy	17.856kWh
Energy Density	≥140Wh/kg
Thermal Management	Liquid cooling/liquid heating/forced air cooling
Cycle Life	≥8000cycles@70%SOH
Operating Temperature	-20~45 °C
Corrosion Protection	C5
Max. Operating Altitude	2000m
Dimensions (W×D×H)	426×897×240mm
IP level	IP67

# Marine Power Battery Rack



## Features

- Type approval by CCS, BV, DNV, and ABS
- Thermal management solution: air cooling or liquid cooling optional
- C5 enclosure corrosion protection level, suitable for inland waterways and marine environments
- Overall system protection rating: IP44, ensuring safe operation of the battery system
- Independent thermal runaway gas exhaust duct to reduce the risk of fire or explosion in the battery compartment
- BMS with continuous active balancing to ensure usable system capacity and slow down degradations

## Model List

Item	Rack
Cell	LFP310
Configuration	1P270S
Energy	267.84kWh
Battery Rack Dimensions (W×D×H)	1110×1054×3169mm (liquid cooling) 1110×1054×2700mm (air cooling)
Nominal Capacity	310Ah
Max. Continuous Charge/Discharge Current	310A/310A
Nominal Voltage	864VDC
Voltage Range	783-945VDC
Weight	2100±50kg
Communication	CAN/RS485
Safety Design	Explosion-proof valve
Thermal Management	Liquid cooling/liquid heating/forced air cooling
BMS	Real-time active/passive balancing
Start-up Mode	Local+remote start
Appearance	Optional decorative panels
IP level	IP44

# C&I ESS Battery Pack



## Features

- Balanced heat transfer performance, excellent cooling conditions and homogeneity of temperature
- Developed with LFP cell to ensure the highest safety
- Intelligent temperature control to adjust temperature automatically to cope with cold and heat
- Multi-physics simulation technology and thermal runaway prevention technology are applied
- The integrated liquid-cooled units selected are featured in adaptive adjustment of the operating state, reducing the auxiliary loss by 30%

## Model List

Item	Pack			
Type	ESS	ESS	ESS	ESS
Cooling Method	Fan cooling	Liquid cooling	Liquid cooling	Liquid cooling
Model	76-314-F	153-314-L	166-314-L	332-314-L
Configuration	1P24S	1P48S	1P52S	1P104S
Capacity (Ah)	314	314	314	314
Voltage(V)	76.8	153.6	166.4	332.8
Energy(kWh)	24.1	48.2	52.2	104.4
Dimensions(mm)	W491*D1060*H230	W792*D1060*H247	W790*D1133*H247.5	W790*D2187.85*H247.3
Communication	CAN	CAN	CAN	CAN
Weight	165kg±5kg	310kg±5kg	332kg±5kg	660kg±5kg
IP level	IP20	IP67	IP67	IP67

# C&I ESS Battery Pack



## Features

- Balanced heat transfer performance, excellent cooling conditions and homogeneity of temperature
- Developed with LFP cell to ensure the highest safety
- Intelligent temperature control to adjust temperature automatically to cope with cold and heat
- Multi-physics simulation technology and thermal runaway prevention technology are applied
- The integrated liquid-cooled units selected are featured in adaptive adjustment of the operating state, reducing the auxiliary loss by 30%

## Model List

Item	Pack		
Type	ESS	ESS	ESS
Cooling Method	Fan cooling	Liquid cooling	Liquid cooling
Model	48-280-F	153-280-L	166-314-L
Configuration	1P15S	1P48S	1P52S
Capacity (Ah)	280	280	314
Voltage(V)	48	153.6	166.4
Energy(kWh)	13.44	43	52.2
Dimensions(mm)	W510*D647*H240	W858*D1067*H240	W780*D1160*H240
Communication	CAN	CAN/Daisy chain	CAN2.0
Weight	100kg±5kg	300kg±8kg	345kg±5kg
IP level	IP20	IP67	IP67

## Applications

Distributed Energy Storage System

Micro-grid Energy Storage System

Charging-Discharging Storage Integrated Station

Urban Energy Storage Station

Commercial Energy Storage

# C&I ESS Battery Rack

## Features

- Balanced heat transfer performance, excellent cooling conditions and homogeneity of temperature
- Multi-physics simulation technology and thermal runaway prevention technology are applied
- 24-h monitoring, big data-based early warning, strong compatibility with Grid/Off-grid
- Intelligent temperature control to adjust temperature automatically to cope with cold and heat
- The integrated liquid-cooled units selected are featured in adaptive adjustment of the operating state, reducing the auxiliary loss by 30%
- Modular structure design is able to compose varieties of electric voltage platform flexibly, all kinds of capacity level systems, and easy to maintain or repair



## Model List

Item	Rack		
Cooling Method	Fan Cooling	Liquid Cooling	Liquid Cooling
Model	720-280-F	1228.8-280-L	1331.2-314-L
Configuration	1P225S	1P384S	1P416S
Capacity	280Ah	280Ah	314Ah
Nominal Voltage	720V	1228.8V	1331.2V
Voltage Range	630V-810V	1075.2V-1382.4V	1164.8V~1497.6V
Standard Charge/Discharge Power	100kW	172kW	208.5kW
Operation Temperature	Charge: 0°C-55°C	Charge: 0°C-55°C	Charge: 0°C-55°C
	Discharge: -20°C-55°C	Discharge: -20°C-55°C	Discharge: -20°C-55°C
Self-discharge Rate	≤3%/month	≤3%/month	≤3%/month
Energy	201 kWh	344 kWh	417 kWh
Dimensions	W1170*D655*H2240mm	W862*D1074*H2339mm	W1212*D1219*H2896mm
Communication	CAN2.0	CAN2.0	CAN2.0
Weight	1800kg	2700kg	2800kg
Storage Humidity	<75% RH, No Condensation	<75% RH, No Condensation	<85% RH, No Condensation
Altitude Height	≤3000m (Pollution Level II)	≤4000m (Pollution Level II)	≤5000m (Pollution Level II)
IP level	IP20	IP54	IP55

# Partnership

---

The logo for EVE, featuring the word "EVE" in a bold, red, sans-serif font. A red lightning bolt symbol is positioned above the letter "V".The logo for REPT BATTERO. "REPT" is in grey, "BATTERO" is in blue, and the Chinese characters "瑞浦兰钧" are in grey. The letters "E" in "REPT" and "E" in "BATTERO" are highlighted in yellow.The logo for SVOLT, featuring the word "SVOLT" in a bold, blue, sans-serif font. The letter "V" is highlighted in yellow.The logo for ABB, featuring the letters "ABB" in a bold, red, sans-serif font. Each letter has a white horizontal bar across its middle.The logo for Linde, featuring the word "Linde" in a white, cursive script font, set against a dark red rectangular background.

danecca

The logo for YUTONG, featuring a blue stylized graphic of three curved lines above the word "YUTONG" in a bold, blue, sans-serif font.The logo for CVC, featuring the letters "CVC" in a bold, orange, sans-serif font, enclosed within a thin orange oval border. A registered trademark symbol (®) is located at the top right of the oval.



## Global Reference

Lithium ion batteries provider with extensive experience and proven reference projects



## Globally Delivered Capacity

Europe 965MWh	North America 503MWh	Africa 375MWh
Asia&Pacific 380MWh	Others 103MWh	



**Headquarters**  
**Next Generation Energy Tech Co., Ltd**

---

Add: Building 9, No. 988 Xinxing Second Road, Pinghu, Jiaxing, Zhejiang, China  
Tel: +86-0573-8579-9929  
Email: [info@nge-tech.cn](mailto:info@nge-tech.cn)  
Web: [www.nge-tech.cn](http://www.nge-tech.cn)

**Shanghai Branch**  
**Hercules Energy Co., Ltd**

---

Add: No. 339, Ledu Road, Songjiang District, Shanghai, China  
Tel: +86-021-6789-0220  
Email: [info@hercules-energy.com](mailto:info@hercules-energy.com)  
Web: [www.hercules-energy.com](http://www.hercules-energy.com)

**U.S. Branch**  
**ACCU-Power Corporation**

---

Add: 17800 Castleton Street, Suite 670, City of Industry, CA 91748  
Tel: +1-626-655-8600  
Email: [support@accupowerus.com](mailto:support@accupowerus.com)  
Web: [www.accupowerus.com](http://www.accupowerus.com)

**Jiaxing Factory**

---

Add: Pinghu, Jiaxing City, Zhejiang Province, China

**Luoyang Factory**

---

Add: Jianxi District, Luoyang City, Henan, China